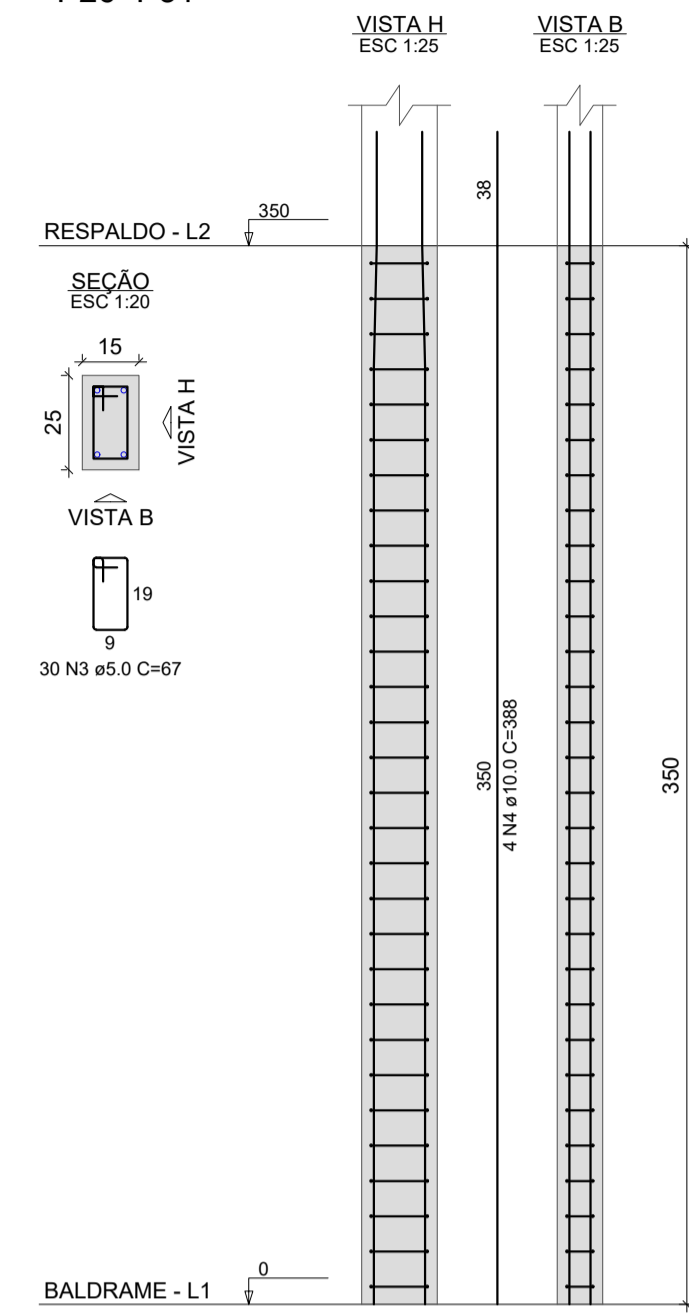
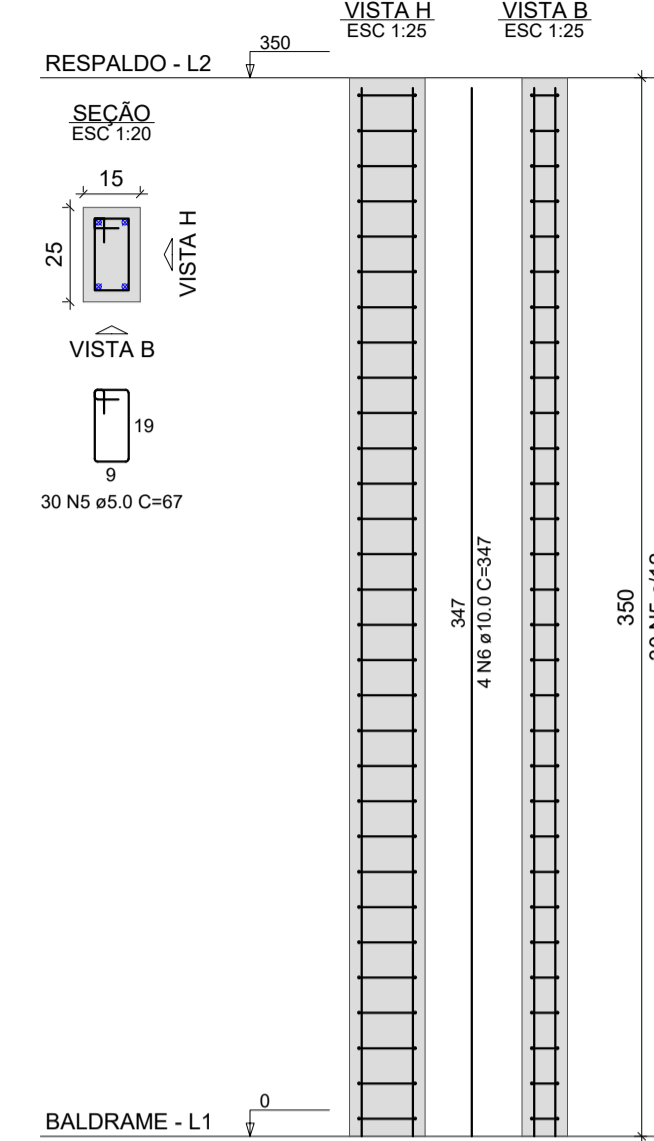


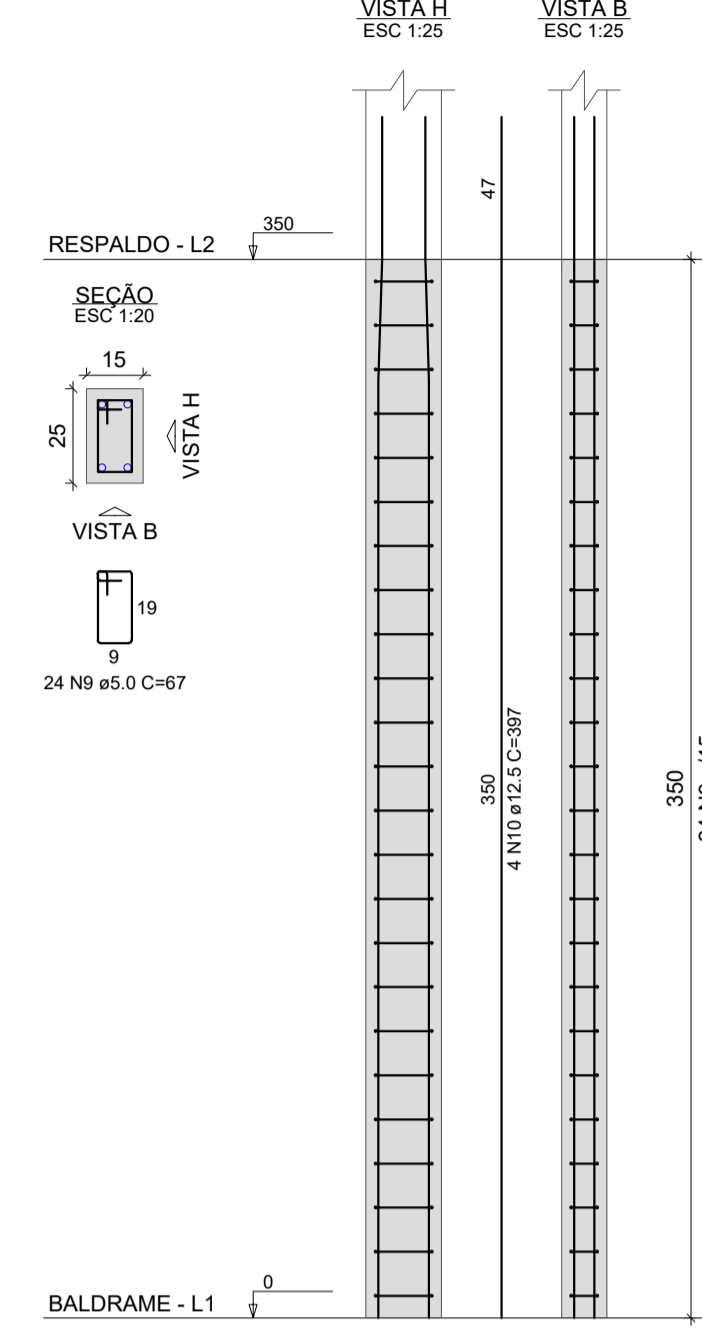
P1=P2=P3=P4=P5=P6=
=P7=P12=P20=P21=
=P26=P31



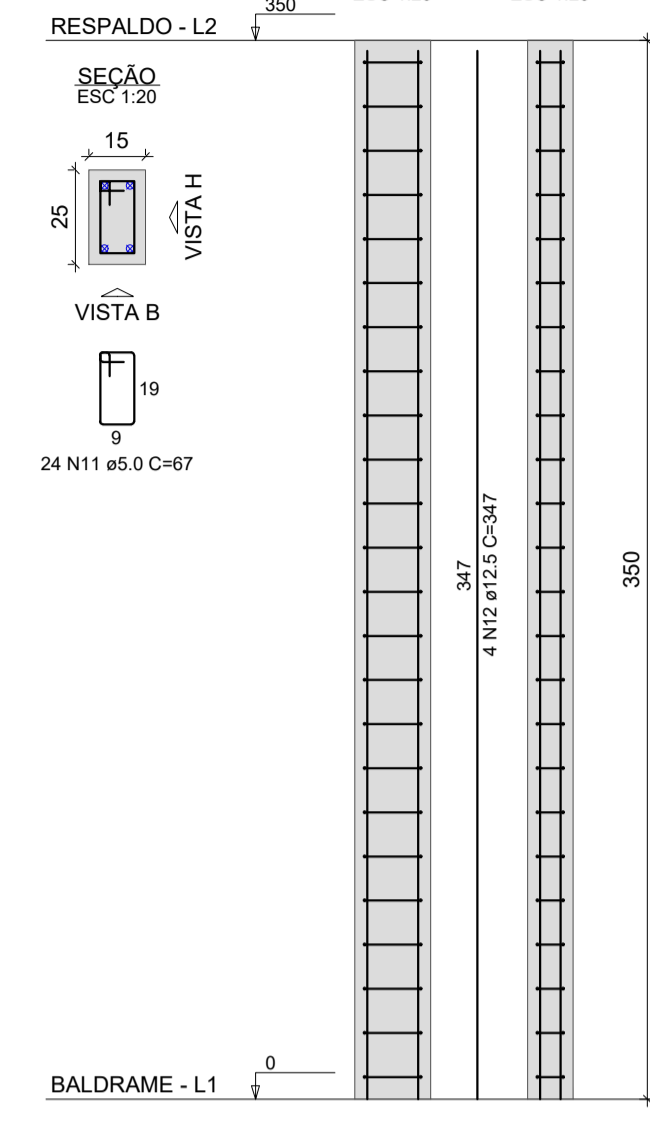
P8=P9=P10=P11



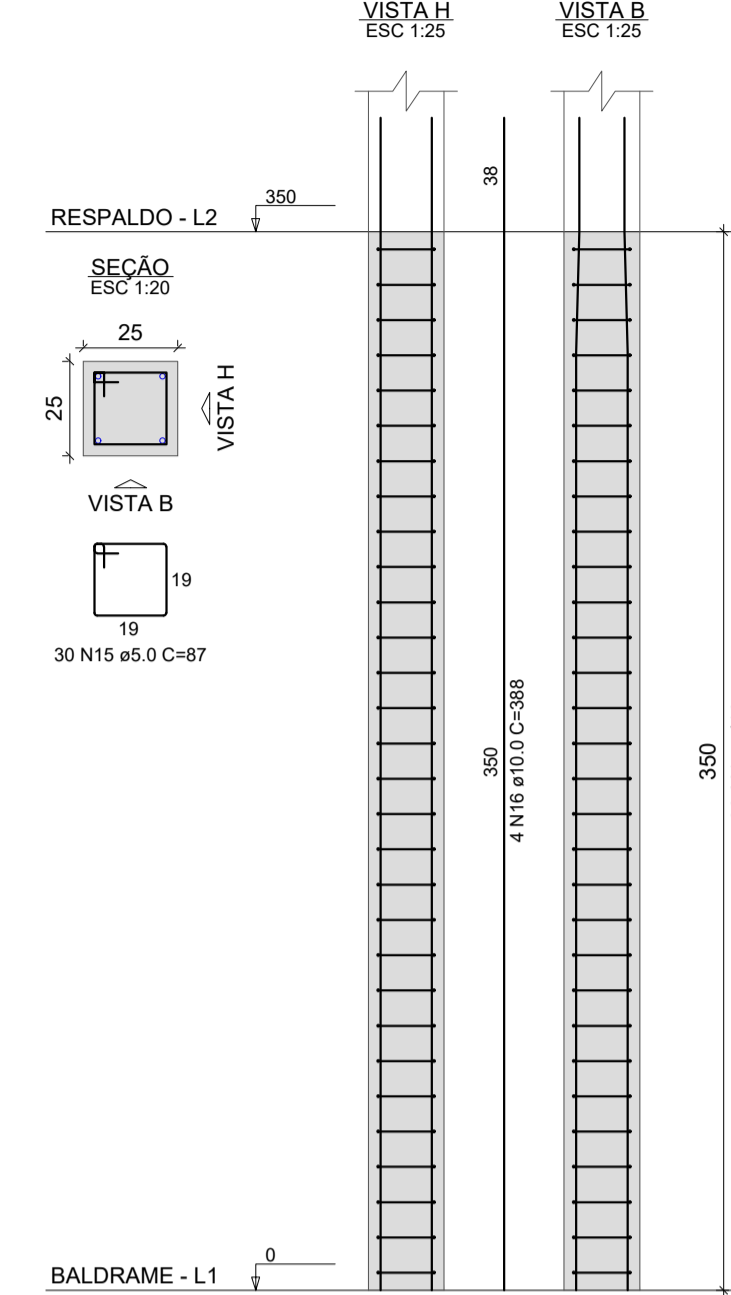
P13=P14=P15=P18=
=P19



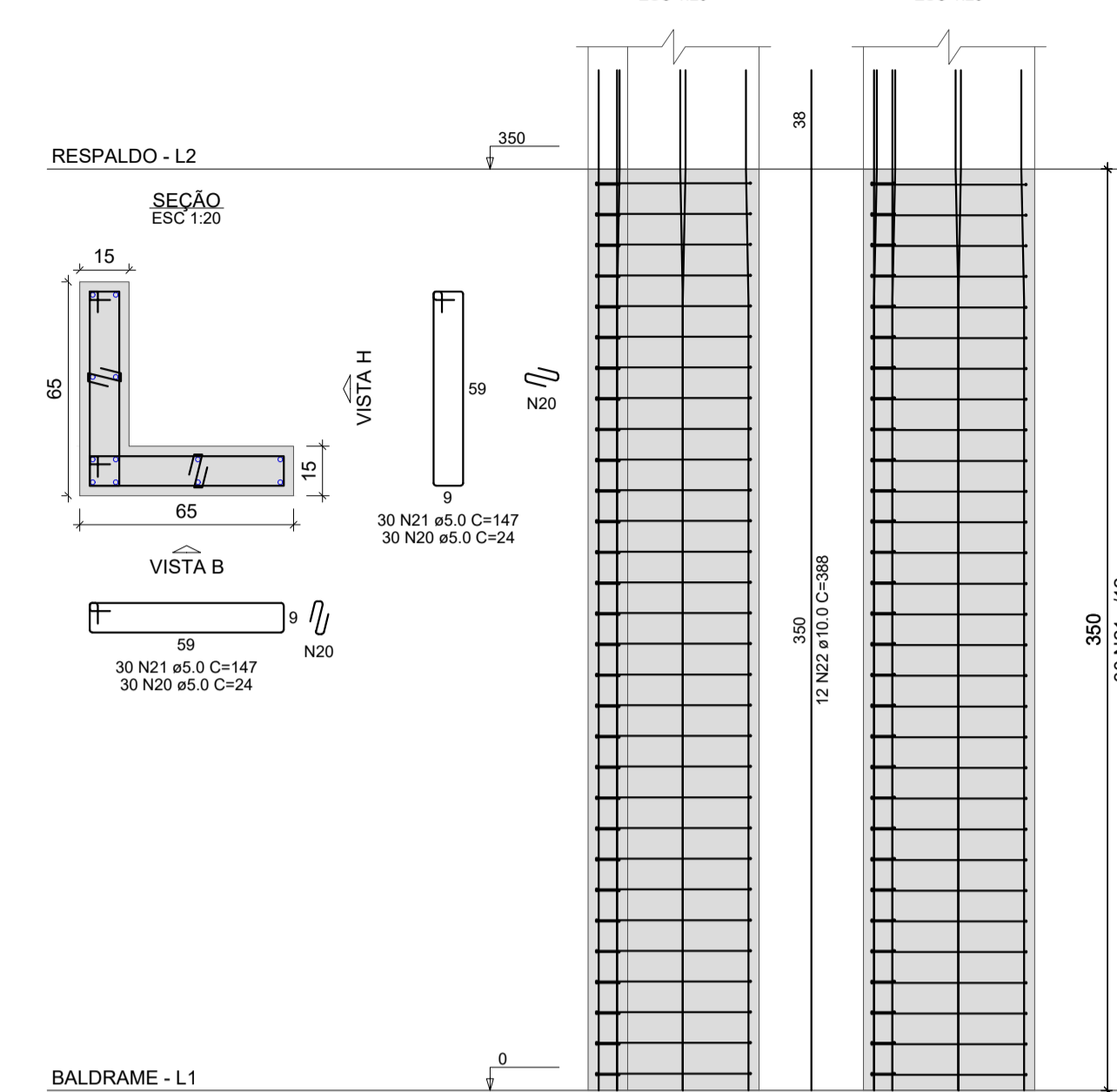
P16



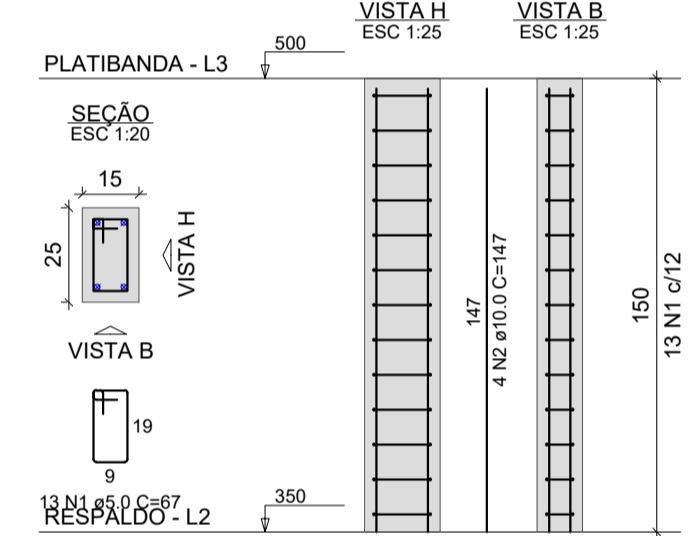
P17=P22=P25=P27=P30



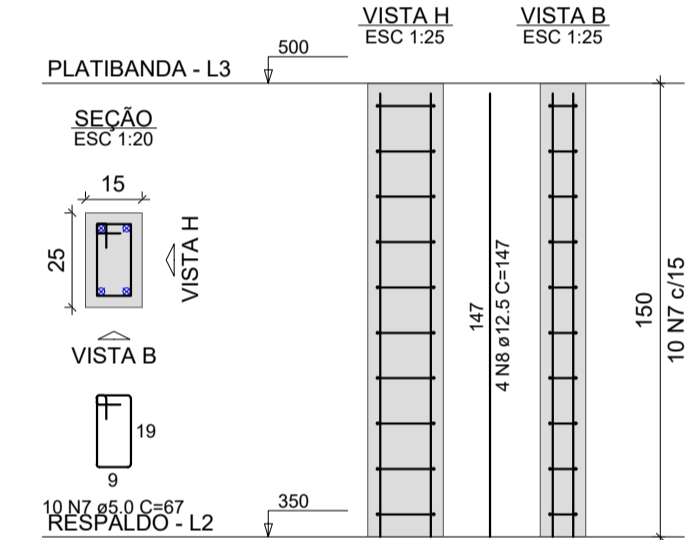
P23=P24



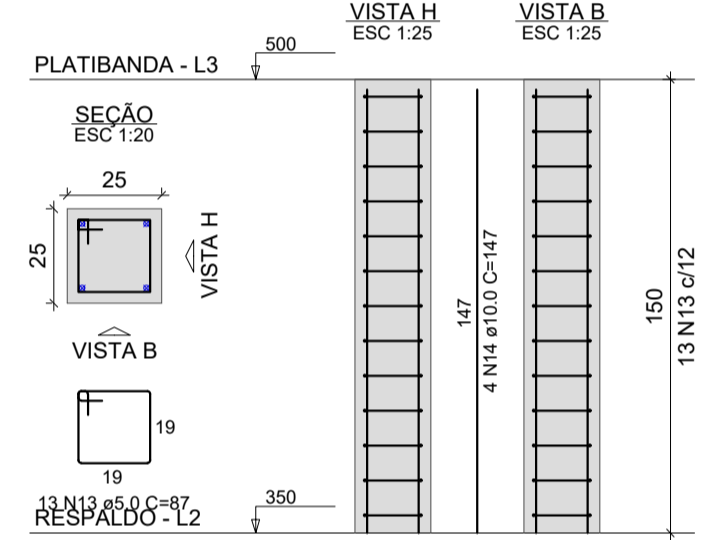
P1=P2=P3=P4=P5=P6=
=P7=P12=P20=P21=
=P26=P31



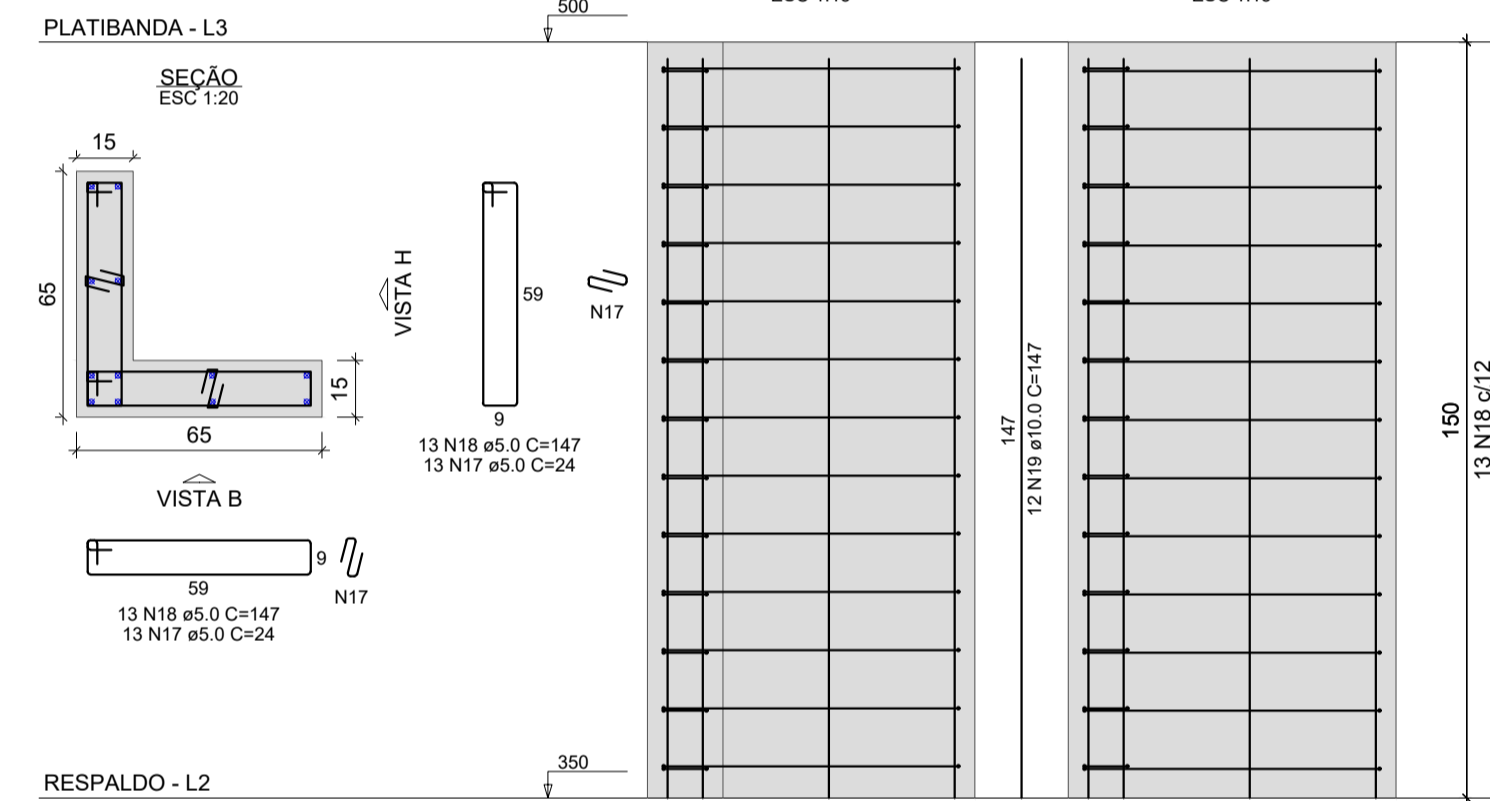
P13=P14=P15=P18=
=P19



P17=P22=P25=P27=P30



P23=P24



RELAÇÃO DO AÇO						
ELEMENTO	AÇO	N	DIAM (mm)	QUANT	C. UNIT (cm)	C. TOTAL (cm)
12xP1-L3	CA60	1	5.0	156	67	10452
	CA50	2	10.0	48	147	7056
12xP1-L2	CA60	3	5.0	360	67	24120
	CA50	4	10.0	48	388	18624
4xPB-L2	CA60	5	5.0	120	67	8040
	CA50	6	10.0	16	347	5552
5xP13-L3	CA60	7	5.0	50	67	3350
	CA50	8	12.5	20	147	2940
5xP13-L2	CA60	9	5.0	120	67	8040
	CA50	10	12.5	20	397	7940
P16-L2	CA60	11	5.0	24	67	1608
	CA50	12	12.5	4	347	1388
P17-L2	CA60	13	5.0	65	67	5655
	CA50	14	10.0	20	147	2940
5xP17-L2	CA60	15	5.0	150	67	10050
	CA50	16	10.0	20	388	7760
2xP23-L3	CA60	17	5.0	52	24	1248
	CA50	18	5.0	52	147	7644
	CA50	19	10.0	24	147	3528
	CA60	20	5.0	120	24	2880
2xP23-L2	CA60	21	5.0	120	147	17640
	CA50	22	10.0	24	388	9312

RESUMO DO AÇO			
AÇO	DIAM (mm)	C. TOTAL (m)	PESO + 0% (kg)
CA50	10.0	547.7	337.7
	12.5	122.7	118.2
CA60	5.0	1037.3	159.9
PESO TOTAL (kg)			
CA50			455.9
CA60			159.9

Volume de concreto (C-25) = 7.13 m³
Área de forma = 133.00 m²

01 CORTE ESQUEMÁTICO
ESCALA: 1:50

MINISTÉRIO DA DEFESA PCN	ANO: 2020	TIPO: EST	FOLHA: 04/11	MODIFICAÇÕES: A B C D E F G H I
Programa Calha Norte CONVENIENTE: PREFEITURA MUNICIPAL DE NOVA BRASÍLIA CNPJ: 15.025.743/0001-85	LOCAL: AVENIDA TANCREDO NEVES ESQUINA COM RUA ALCIDES LIMA BONFIM			ÁREA: CONFORME PROJETO ARQUITETÔNICO
OBRA: CONSTRUÇÃO DA SEDE DA PREFEITURA MUNICIPAL DE NOVA BRASÍLIA - MT PILARES, CORTE ESQUEMÁTICO		DESENHO: LEONARDO MARTINS	DATA: 10/09/2020	
AUTOR: PREFEITO MUNICIPAL:			DIM: METRO	
AUTOR:			ESCALA: INDICADA	