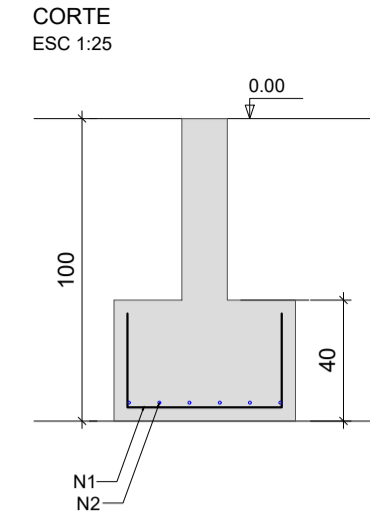
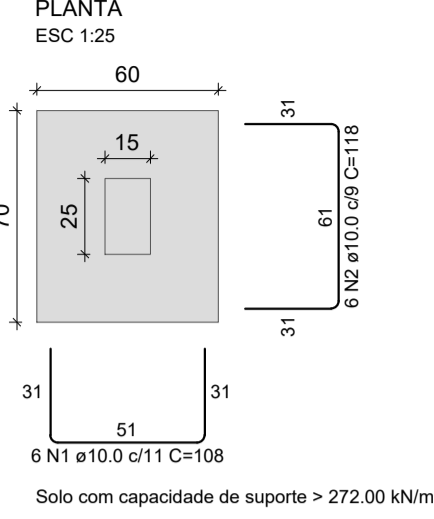
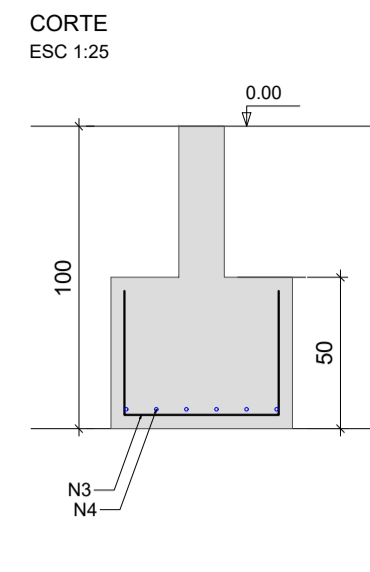
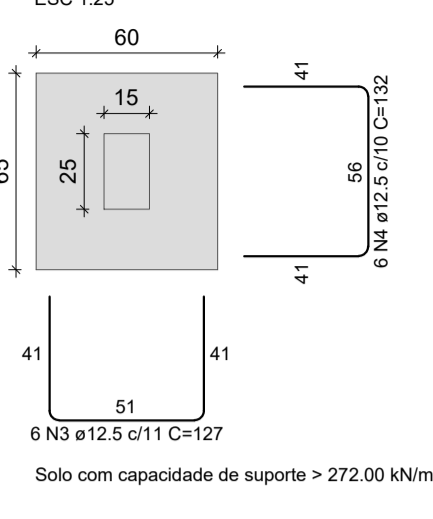


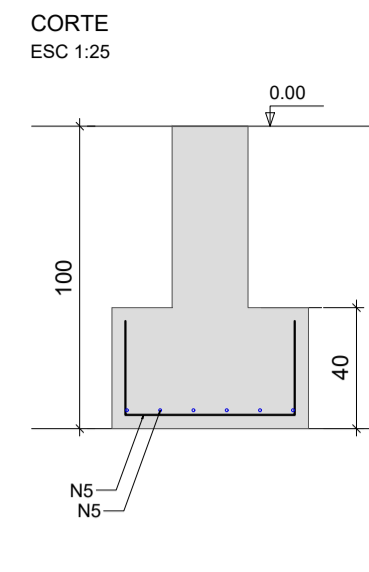
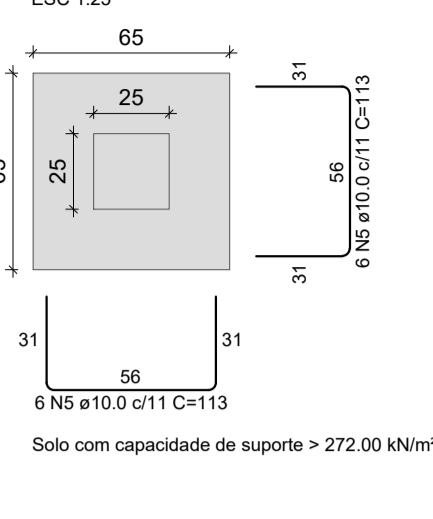
S1=S2=S3=S4=S5=S6=S7=S8=S9=S10=S11=S12  
=S20=S21=S26=S31



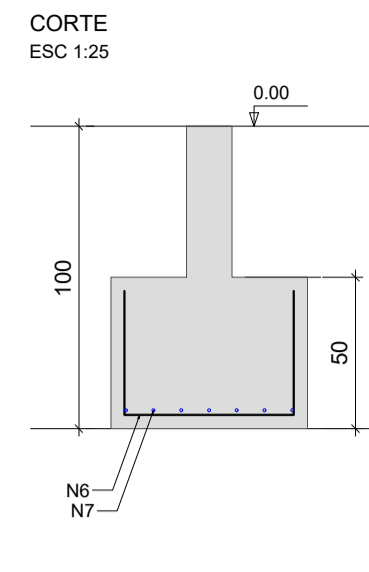
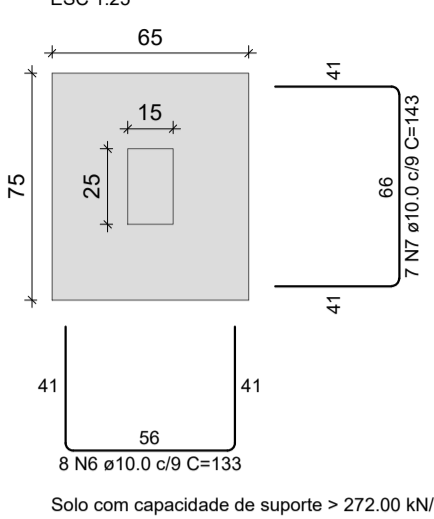
S13=S14=S15=S16



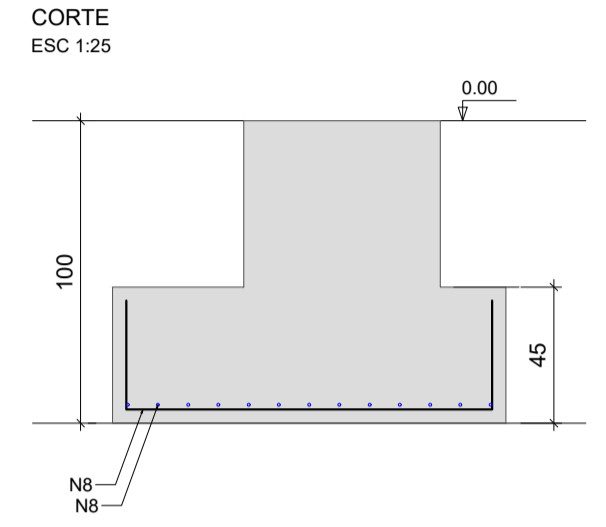
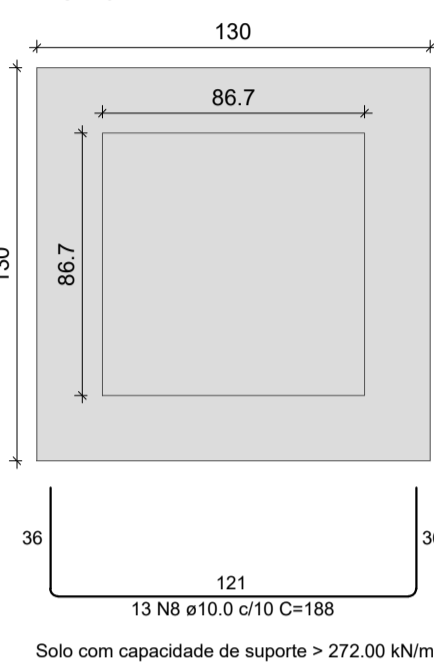
S17=S22=S25=S27=S30



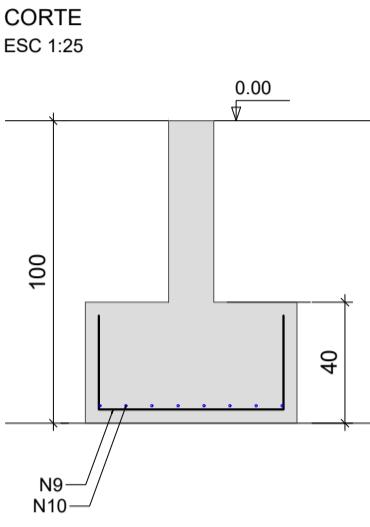
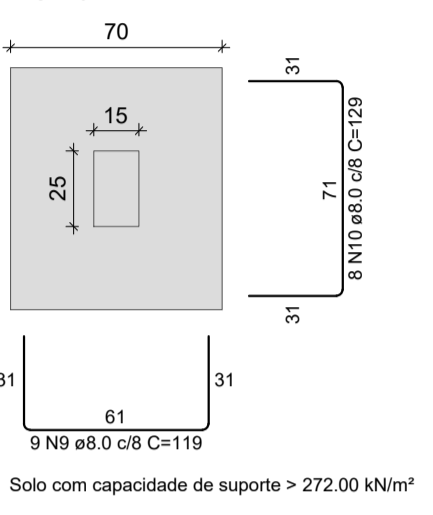
S18=S19=S29



S23=S24



S28



RELAÇÃO DO AÇO

ELEMENTO	AÇO	N	DIAM (mm)	QUANT	C.UNIT (cm)	C.TOTAL (cm)
16xS2	CA50	1	10.0	96	108	10368
	CA50	2	10.0	96	118	11328
4xS13	CA50	3	12.5	24	127	3048
	CA50	4	12.5	24	132	3168
5xS17	CA50	5	10.0	60	113	6780
3xS18	CA50	6	10.0	24	133	3192
	CA50	7	10.0	21	143	3003
2xS23	CA50	8	10.0	52	188	9776
S28	CA50	9	8.0	9	119	1071
	CA50	10	8.0	8	129	1032

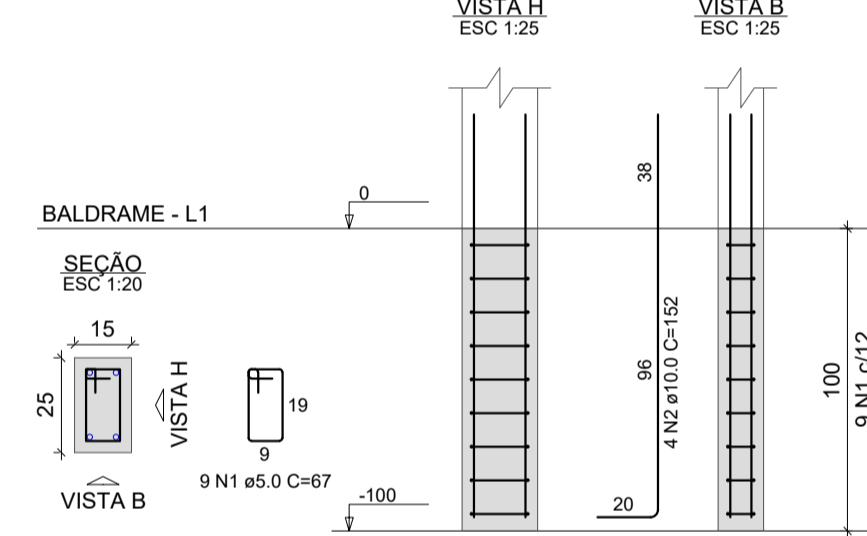
RESUMO DO AÇO

AÇO	DIAM (mm)	C.TOTAL (m)	PESO + 0% (kg)
CA50	8.0	21	8.3
	10.0	444.5	274
	12.5	62.2	59.9
PESO TOTAL (kg)			342.2

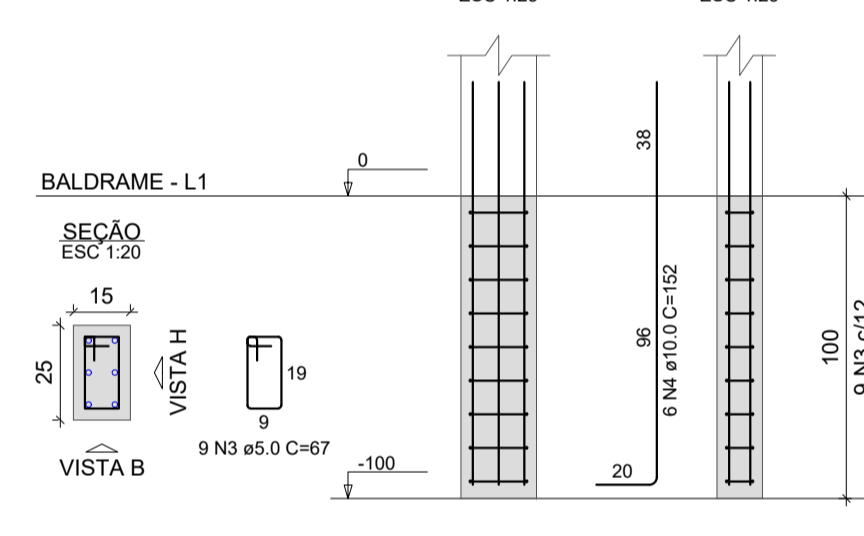
Volume de concreto (C-25) = 6.79 m³

Área de forma = 36.92 m²

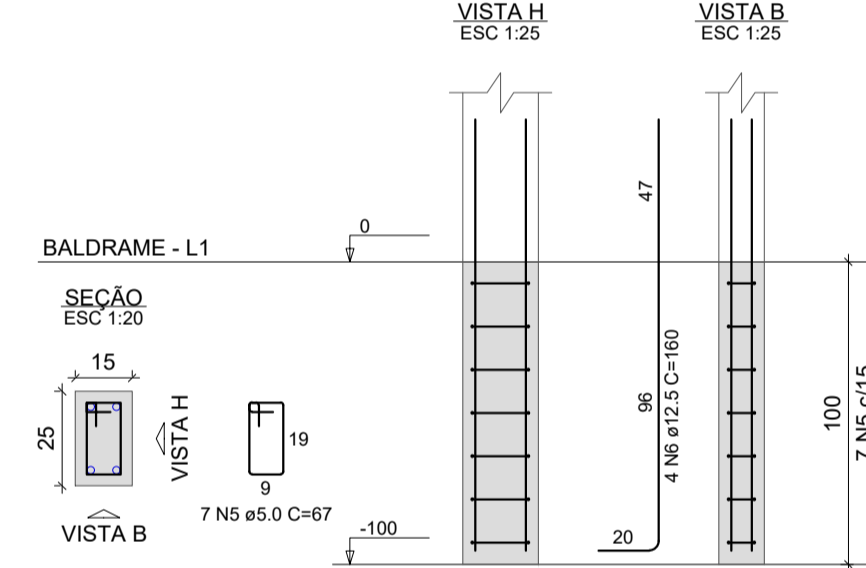
P1=P2=P3=P4=P5=P6=P8=P9=  
=P10=P11=P12=P20=P21=  
=P26=P31



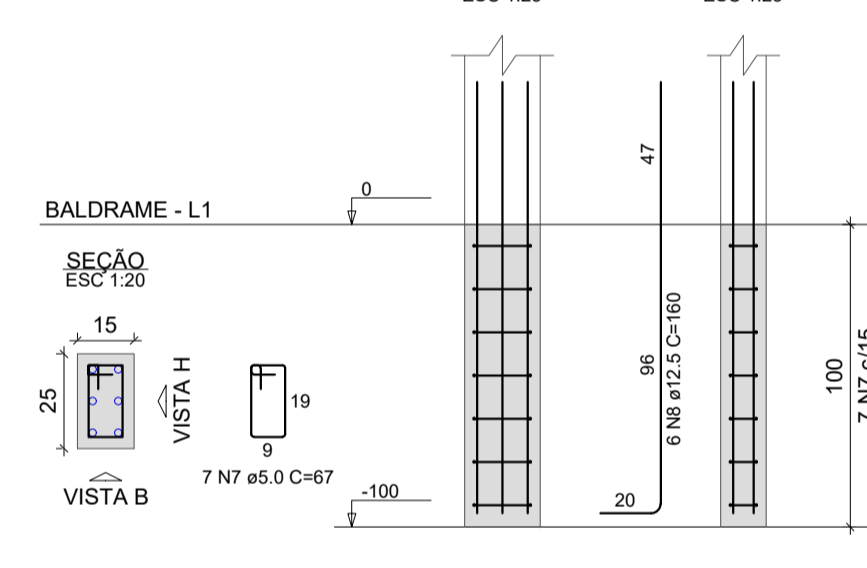
P7



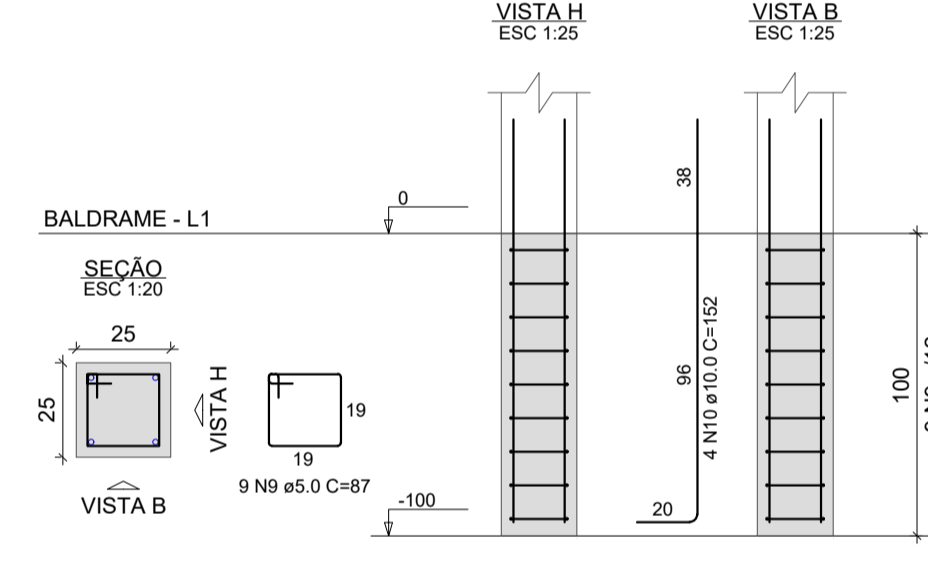
P13=P14=P15=P18=P19



P16



P17=P22=P25=P27=P30



RELAÇÃO DO AÇO

ELEMENTO	AÇO	N	DIAM (mm)	QUANT	C.UNIT (cm)	C.TOTAL (cm)
16xP1	CA60	1	5.0	135	67	9045
	CA50	2	10.0	60	152	9120
P7	CA50	3	5.0	9	67	603
5xP13	CA50	4	10.0	6	152	912
	CA60	5	5.0	35	67	2345
	CA50	6	12.5	20	160	3200
P16	CA60	7	5.0	7	67	469
	CA50	8	12.5	6	160	960
5xP17	CA60	9	5.0	45	87	3915
	CA50	10	10.0	20	152	3040
2xP23	CA60	11	5.0	36	24	864
	CA60	12	5.0	36	47	5292
	CA50	13	10.0	24	152	3648
P28	CA60	14	5.0	9	67	603
	CA50	15	10.0	8	110	880
P29	CA60	16	5.0	7	67	469
	CA50	17	12.5	4	109	436

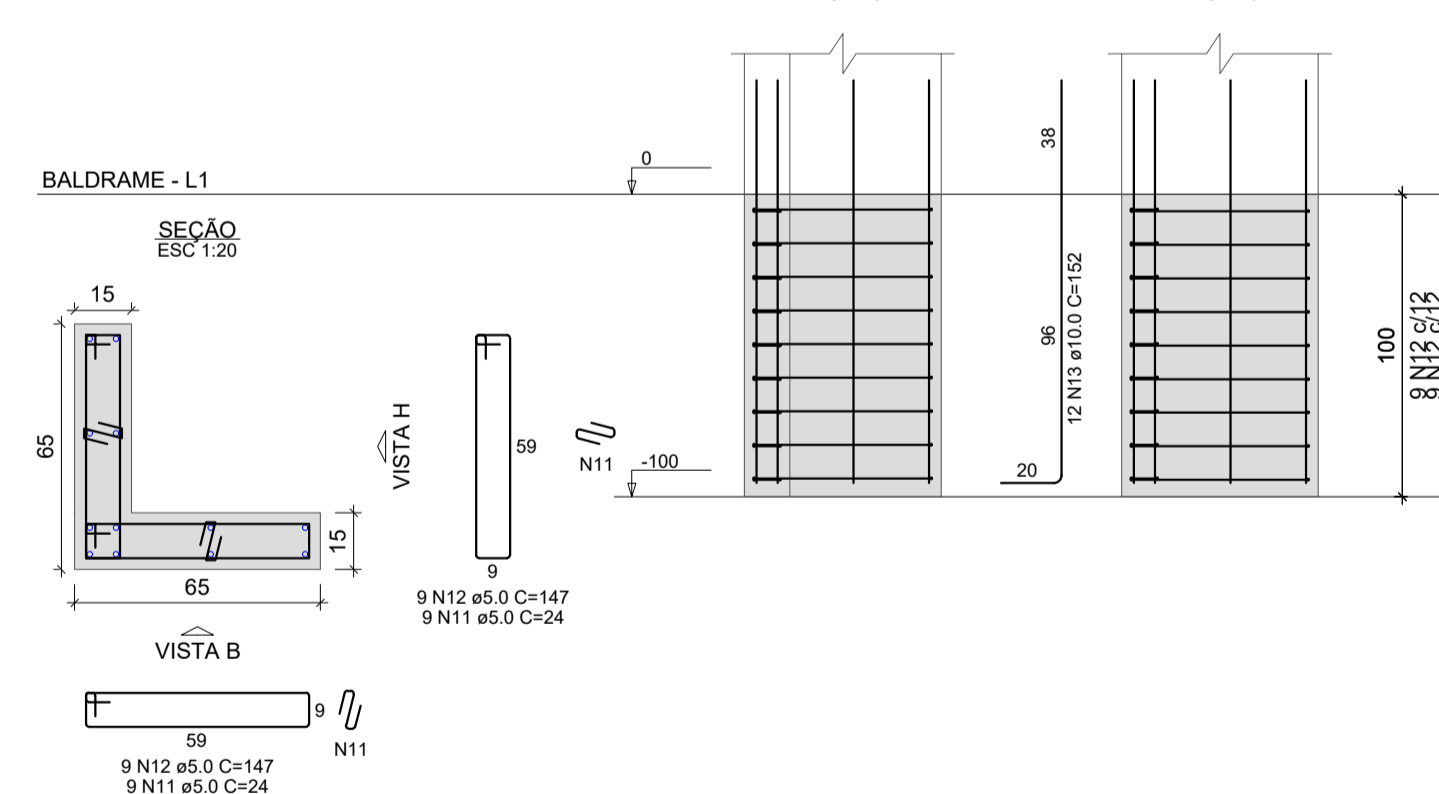
RESUMO DO AÇO

AÇO	DIAM (mm)	C.TOTAL (m)	PESO + 0% (kg)
CA50	10.0	176	108.5
	12.5	46	44.3
CA60	5.0	236.1	36.4
PESO TOTAL (kg)			189.2

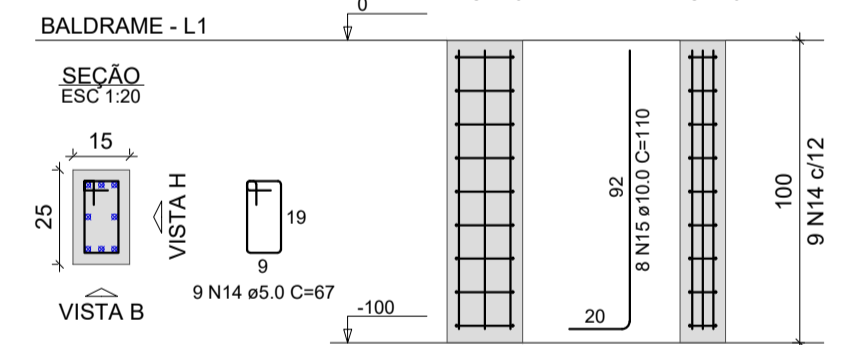
Volume de concreto (C-25) = 1.56 m³

Área de forma = 29.40 m²

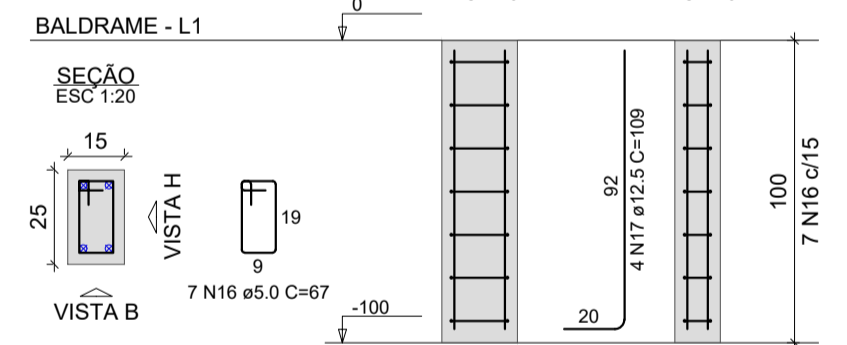
P23=P24



P28



P29



MINISTÉRIO DA DEFESA	ANO: 2020	TIPO: EST	FOLHA: 02/11	MODIFICAÇÕES:
PCN				A
Programa Calha Norte				B
CONVENIENTE:	LOCAL: AVENIDA TANCREDO NEVES ESQUINA COM RUA ALCIDES LIMA BONFIM			C
OBRA: CONSTRUÇÃO DA SEDE DA PREFEITURA MUNICIPAL DE NOVA BRASÍLIA - MT	ÁREAS: CONFORME PROJETO ARQUITETÔNICO			D
SAPATAS, TOCO DE PILAR				E
				F
AUTOR: LEONARDO MARTINS	DESENHO: LEONARDO MARTINS	DATA: 10/09/2020		G
PREFEITO MUNICIPAL:		DIM: METRO		H
AUTOR:		ESCALA: INDICADA		I